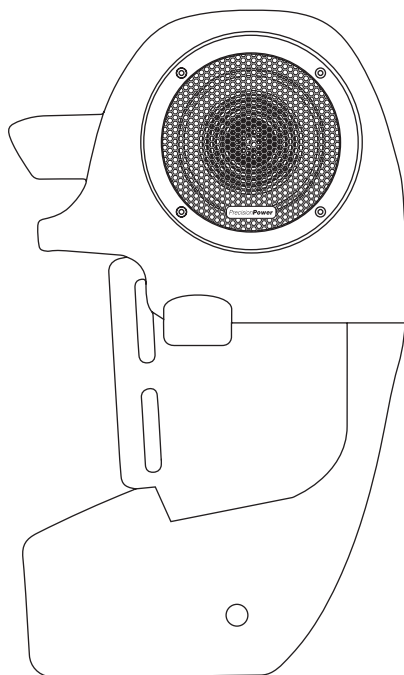
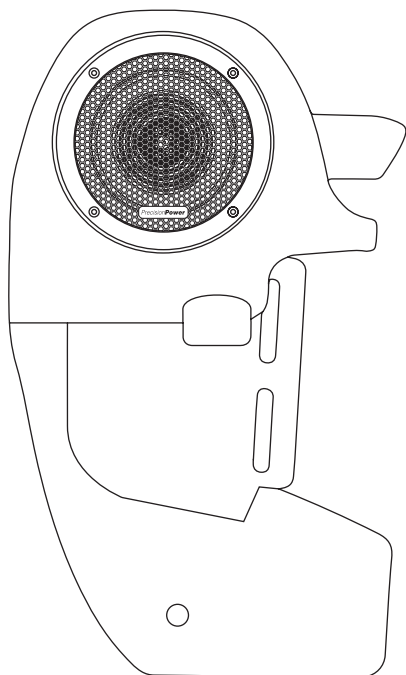




# PrecisionPower®

**Absolutely State of the Art Mobile Audio™**

## ***Instllation Instructions for Lower Vented Fairing w/ 6.5" Speakers for Harley Davidson Touring Motorcycles***



***HD13.LVF (1998-2013)***

***HD14.LVF (2014+)***

***Speaker Installation***

***Pg. 2-3***

***Pg. 4-5***

***Pg. 6***

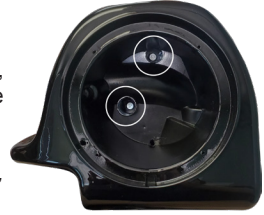
# INSTALLATION OF LOWER VENTED FAIRING

HD13.LVF (1998-2013 Model Years)

1. Remove and open the lower fairings from the box. Set the fairings on a flat & clean surface, protecting the paint from damage.

2. Using a ratchet with a 10mm socket on an extension, remove the two bolts from inside the speaker pod to release the crash bar cover. Set the crash bar covers & bolts aside.

**Tip:** Access to these two bolts is tight. Use a 1/4" drive ratchet, extension & deep socket if available.



3. Flip the fairings over and remove the three Phillips screws to release the speaker pod. Set the speaker pods & screws aside.

**Tip:** Use a long shank Phillips head screwdriver with magnetic tip for easier access and removal of these screws.



4. Thread the speaker wire included with this kit thru a hole in the sidewall of the lower fairing, located near the crash bar channel. Insert the speaker wire terminals first, pulling about 6" of speaker wire into the fairing. Insert one side of the rubber grommet thru the hole into the fairing.

**Tip:** Use a small/mini flathead screwdriver to press one side of the rubber grommet thru the fairing sidewall.



5. Thread the speaker wire thru a hole in the back of the speaker pod removed in step #3. Leave about 3" of speaker wire inside the speaker pod, and 3" between speaker pod and the lower fairing.

**Tip:** Insert one speaker terminal at a time thru the hole in the speaker pod. If the hole is too small, use a 1/4" drill bit & cordless drill to enlarge the hole.



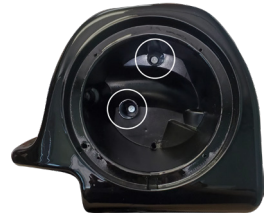
6. Hold the speaker pod and fairing together and flip the assembly over, aligning the screw holes of the speaker pod to the lower fairing. Reattach the speaker pod to the lower fairing using the three Phillips screws removed in step 3. Set the complete speaker pod & lower fairing assembly aside.



7. Remove the lower crash bar clamps included with this kit and install one around the lower portion of each crash bar. The flat end of the clamp should be up, and pointing toward the foot pedals.



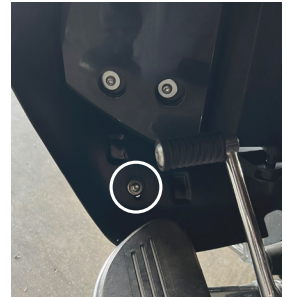
8. With one hand, hold the lower fairing assembly in place to the crash bar, aligning the upper portion of the crash bar into the crash bar channel of the lower fairing. With another hand, join the crash bar cover removed in #2 to the lower fairing.



9. With your third & fourth hands (or a helper), reattach the crash bar cover to the lower fairing using a ratchet & 10mm socket on an extension with the bolts removed in step 2. Secure only hand tight so final adjustments can be made later.

10. Align the screw hole of the lower crash bar clamp to the hole in the bottom of the lower fairing. Push a lower crash bar clamp hex bolt with washer included in the kit thru the hole in the lower portion of the fairing and thru the holes of the lower crash bar clamp installed in step 7.

**Tip:** *The crash bar clamp is an exact fit to the crash bar. Holding the clamp together by hand might be difficult. Use a pair of pliers to hold the clamp ends together while inserting the bolt.*



11. Tighten the nut to the lower crash bar clamp bolt using a socket & ratchet or wrench and a 5mm hex key tool or screwdriver. Secure only hand tight so final adjustments can be made.

12. Align the lower fairing with the angle of the crash bar, so it is not crooked. Tighten the crash bar cover bolts & the lower crash bar clamp bolt/nut into their final position using the ratchet with 10mm socket on an extension & 5mm hex key.

# INSTALLATION OF LOWER VENTED FAIRING

HD14.LVF (2014+ Model Years)

1. Remove and open the lower fairings from the box. Set the fairings on a flat & clean surface, protecting the paint from damage.

2. Using a ratchet with a 10mm socket on an extension, remove one bolt from inside the speaker pod to release the crash bar cover. Set the crash bar covers & bolts aside.



**Tip:** Access to these two bolts is tight. Use a 1/4" drive ratchet, extension & deep socket if available.

3. Flip the fairings over and remove three 3mm hex screws w/ washers to release the speaker pod. Set the speaker pods & screws aside.



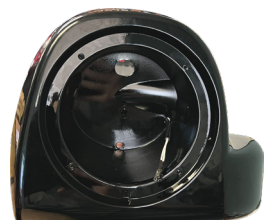
**Tip:** Use a screwdriver with magnetic bit holder and 3mm bit for easier access and removal of these screws.

4. Thread the speaker wire included with this kit thru a hole in the sidewall of the lower fairing, located near the hole in the sidewall of the lower fairing, located near the crash bar channel. Insert the speaker wire terminals first, pulling about 6" of speaker wire into the fairing. Insert one side of the rubber grommet thru the hole into the fairing.



**Tip:** Use a small/mini flathead screwdriver to press one side of the rubber grommet thru the fairing sidewall.

5. Thread the speaker wire thru a hole in the back of the speaker pod removed in step #3. Leave about 3" of speaker wire inside the speaker pod, and 3" between speaker pod and the lower fairing.



**Tip:** Insert one speaker terminal at a time thru the hole in the speaker pod. If the hole is too small, use a 1/4" drill bit & cordless drill to enlarge the hole.

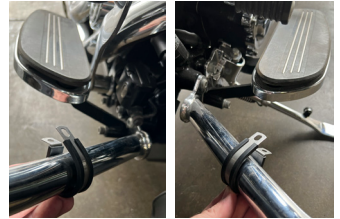
6. Hold the speaker pod and fairing together and flip the assembly over, aligning the screw holes of the speaker pod to the lower fairing. Reattach the speaker pod to the lower fairing using the three hex head screws removed in step 3.



7. Using a ratchet with a 10mm socket on an extension, remove two nuts from the upper crash bar clamp. Set the complete fairing assembly & upper crash bar clamps aside.



8. Remove the lower crash bar clamps included with this kit and install one around the lower portion of each crash bar. The flat end of the clamp should be up, and pointing toward the foot pedals.

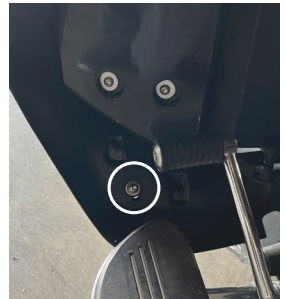


9. With one hand, hold the lower fairing assembly in place to the crash bar, aligning the upper portion of the crash bar into the crash bar channel of the lower fairing. With your third & fourth hands (or a helper), reattach the upper crash bar clamp using a ratchet & 10mm socket on an extension. Secure only hand tight so final adjustments can be made later.



10. Align the screw hole of the lower crash bar clamp to the hole in the bottom of the lower fairing. Push a lower crash bar clamp hex bolt with washer included in the kit thru the hole in the lower portion of the fairing and thru the holes of the lower crash bar clamp installed in step 8.

**Tip:** The crash bar clamp is an exact fit to the crash bar. Holding the clamp together by hand might be difficult. Use a pair of pliers to hold the clamp ends together while inserting the bolt.



11. Tighten the nut to the lower crash bar clamp bolt using a socket & ratchet or wrench and a 5mm hex key tool or screwdriver. Secure only hand tight so final adjustments can be made.

12. Align the lower fairing with the angle of the crash bar, so it is not crooked. Tighten the upper crash bar clamp nuts & the lower crash bar clamp bolt/nut into their final position using the ratchet with 10mm socket on an extension & 5mm hex key.

13. Reattach the crash bar cover to the lower fairing using a ratchet & 10mm socket on an extension with the bolt removed in step 2.



# INSTALLATION OF SPEAKERS

All Models

1. Remove speaker and EQ modules from the box. Set speakers & grills aside.

2. Connect the FEMALE terminals of the speaker wire installed into the speaker pod to the MALE terminals of the EQ module. The speaker wire with black stripe should connect to the black wire of the module, and the solid color speaker wire should connect with the red wire of the module. Tuck the EQ module and speaker wire in the back of the speaker pod



3. Connect the FEMALE terminals of the EQ module to the corresponding MALE terminals of the speaker. Red wire to + terminal of the speaker, black wire to the – terminal of the speaker.

4. Place the grill over the speaker aligning the four screw holes and with the PrecisionPower logo positioned in the lower half of the speaker. Insert the four black screws included in this kit.

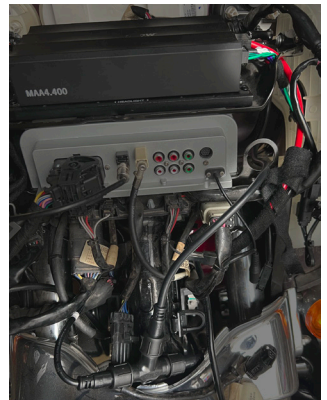


5. Align the speaker/grill assembly with screws to the screw holes of the speaker pod. Attach the grill & speaker to the speaker/grill assembly to the pod using a #2 phillips screwdriver.

**Tip:** If aligning the speaker into the speaker pod is difficult, the EQ module can be omitted; is not required for use. Disconnect it from the speaker and speaker wire, then connect the speaker wire from inside the pod directly to the speaker. The speaker wire with black stripe should connect to the – terminal on the speaker. The solid color speaker wire should connect to the + terminal on the speaker.

\*\*\*The remaining steps assume you have opened the upper fairing to install PrecisionPower's MAA4.400 amplifier, or to access it/an existing amplifier.

6. Route the speaker cable from each lower fairing to the upper fairing. Connect each lower fairing speaker cable to the corresponding Lch and Rch side of the T-connector included in this kit. Attach the speaker cable with 8-pin amplifier connector included in this kit. Attach the speaker cable with 8-pin amplifier connector to the center of the T-Connector. Secure the speaker cables and T-connector to other cables or inner fairing brackets, etc. using a few cable/zip ties.



7. Route the speaker cable with 8-pin amplifier connector to the amplifier and connect it to the speaker output of PrecisionPower's MAA4.400.

*\*If the amplifier is already powering PrecisionPower's fairing speakers and/or saddlebag lid speakers, attach the 8-pin amplifier connector for the lower fairings to the female connector attached to the upper fairing or saddlebag lid speaker cable.*

*\*If another amplifier is used, you can cut off the 8-pin amplifier connector and connect the individual speaker wire as direct by the amplifier manufacturer.*